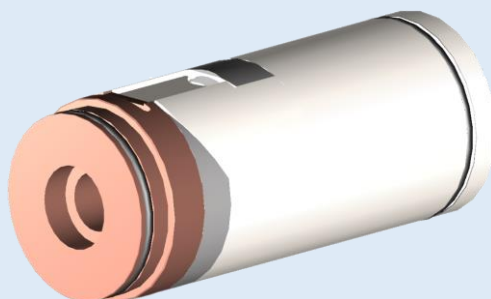


### CTLH-SC40-SEHP



|                  | <sup>18</sup> F      | <sup>13</sup> N   |
|------------------|----------------------|-------------------|
| Max Current      | 70 μA                | 70 μA             |
| Yield (1 T½)     | 4.1 Ci (111 GB)      | 200 mCi (5.4 GBq) |
| Foil life        | 15,000 μA.hr         | 15,000 μA.hr      |
| Fill Volume      | 2.2 mL               | 2.2 mL            |
| Chamber volume   | 3.7 mL               | 3.7 mL            |
| Chamber material | Niobium              | Aluminum          |
| Body material    | Stainless Steel      | Aluminum          |
| Window material  | HAVAR®, 25 μm        |                   |
| Dimensions (mm)  | 42mm (D) x 100mm (L) |                   |

This target is fully compatible with the Eclipse HP cyclotron target changer. It offers up to 20% higher production than the OEM HP targets with stable yields. The target operation lifetime is improved by 200%. This drastically reduces radiation dose to technicians and maintenance costs.

<sup>1</sup> Reported yield correspond to a bombardment time of 1 half-life. Yield may vary with each cyclotron system beam characteristics.

Stracotek reserves the right to change, add, suspend, cancel, remove or otherwise modify the products offered on this brochure at any time without prior notice or obligation.

### Ordering information

| Description   | Part Number           | Image   |
|---|-----------------------|---|
| $^{18}\text{F}$ target for Eclipse HP Cyclotrons, Niobium chamber.  | CTLH-SC40-SEHP-NB     |    |
| $^{13}\text{N}$ target for Eclipse HP Cyclotrons, Aluminum chamber. | CTLH-SC40-SEHP-AL     |    |
| Target rebuild kit for CTLH-SC40-SEHP $^{18}\text{F}$ targets       | TRK-CTLH-SC40-SEHP-TA |   |
| Target rebuild kit for CTLH-SC40-SEHP $^{13}\text{N}$ targets       | TRK-CTLH-SC40-SEHP    |   |
| Workbench mount for Eclipse HP Target, Material: Stainless Steel    | CT-WBM-SEHP-SS        |   |
| Workbench mount for Eclipse HP Target, Material: Lead               | CT-WBM-SEHP-PB        |  |
| Workbench testing unit for Eclipse HP Targets                       | CT-WBT-SEHP           |  |
| O-ring pick tool  | CTL-TL-OSP            |  |
| Rear connection clamp for Eclipse HP targets.                       | CTLH-CL-SEHP          |  |